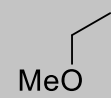




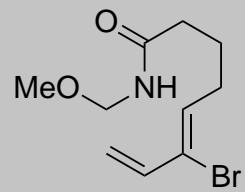
10 ep (Overall)  
8 ep (LLS)



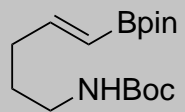
4



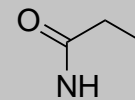
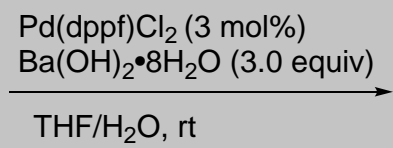




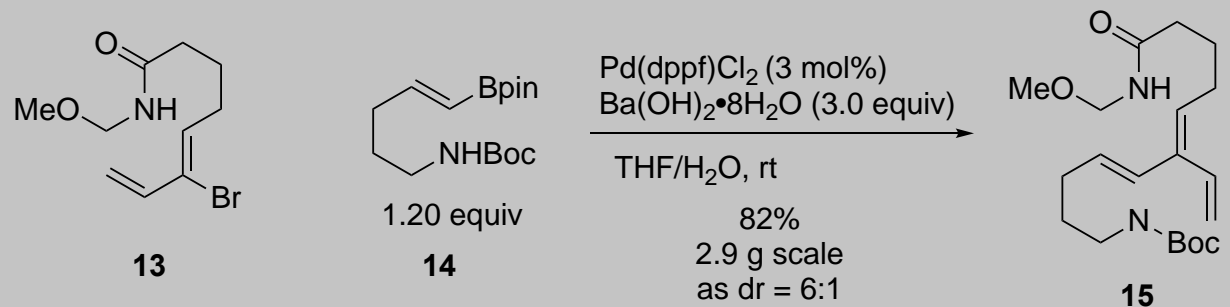
**13**



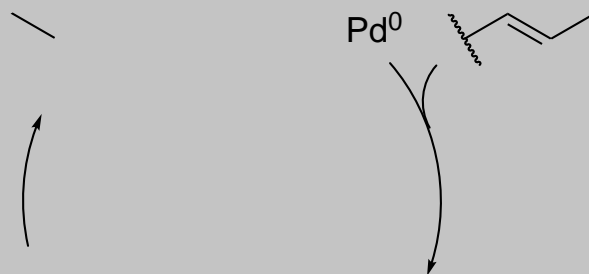
**14**



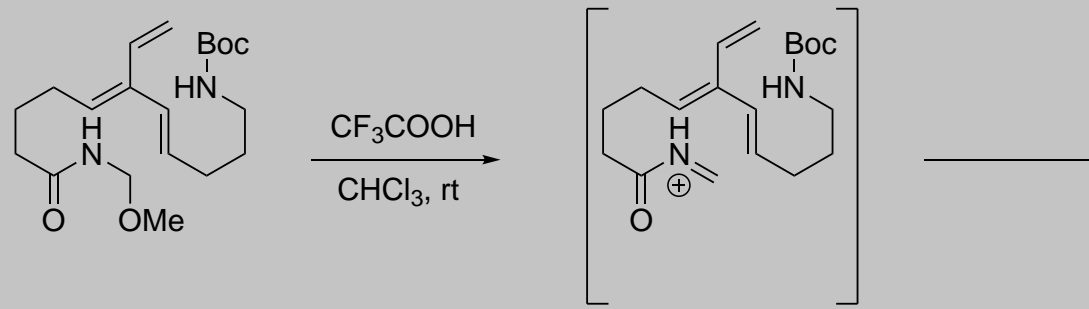


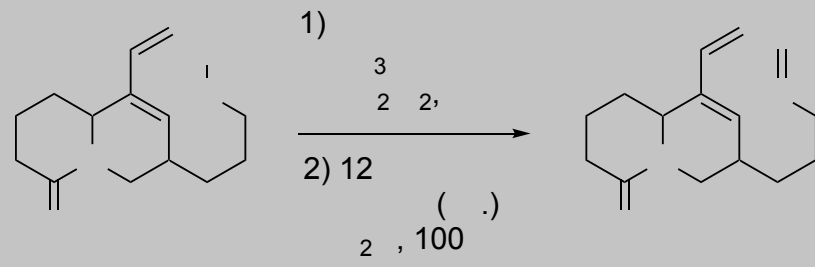


Stereoinvertive Suzuki coupling

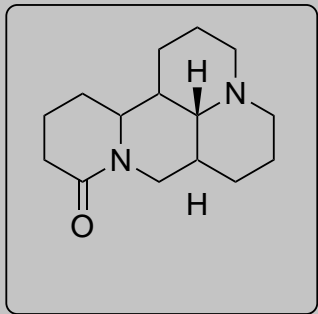


This process, which is a guided borrowing experience in related Negishi methodology, is well known. The **first example** of a stereoinvertive Suzuki-Miyaura cross-coupling



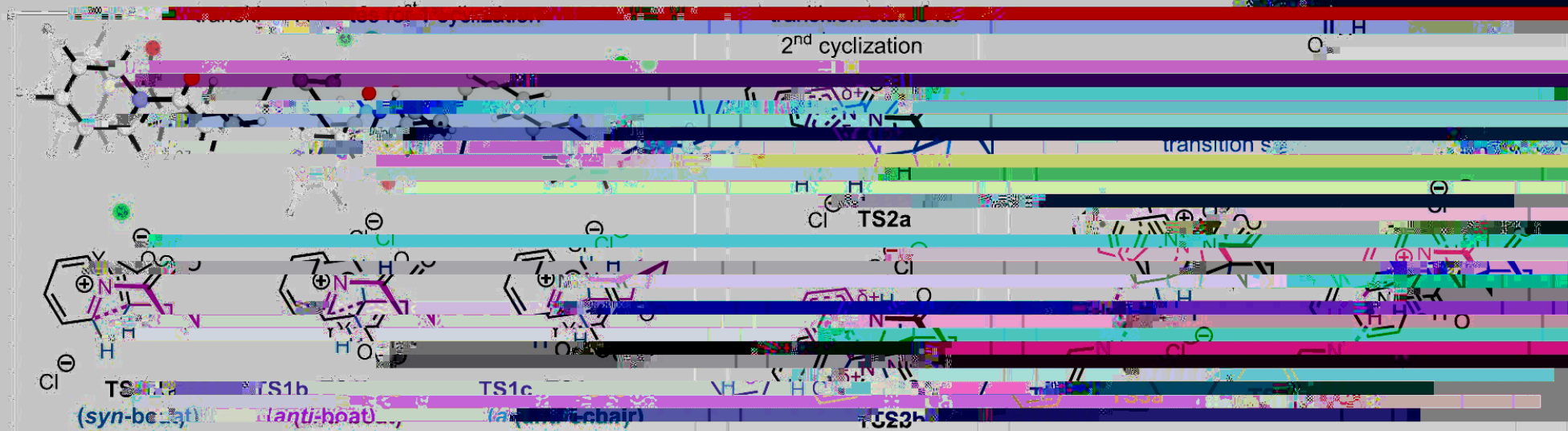
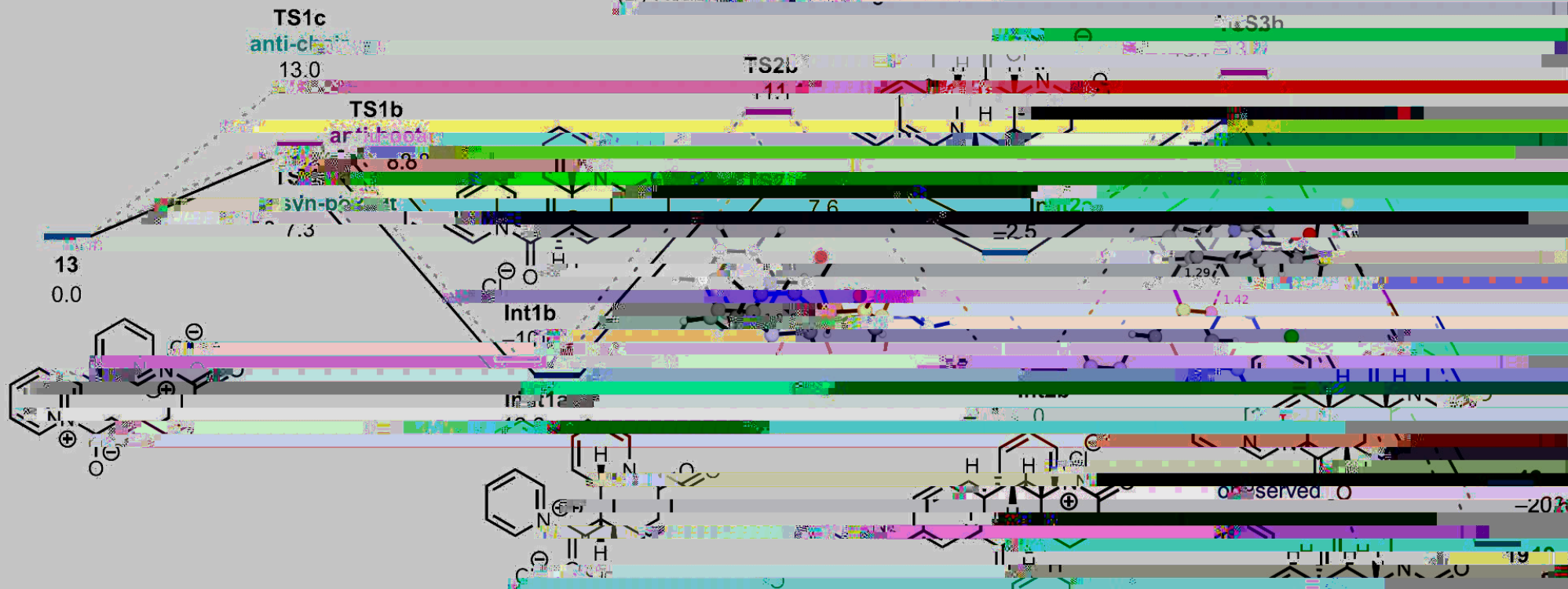


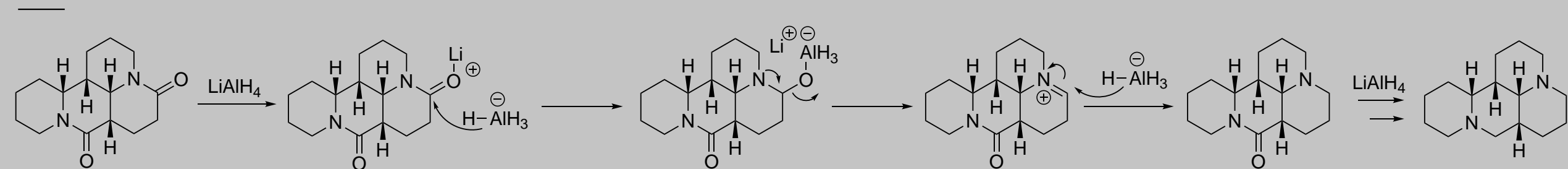
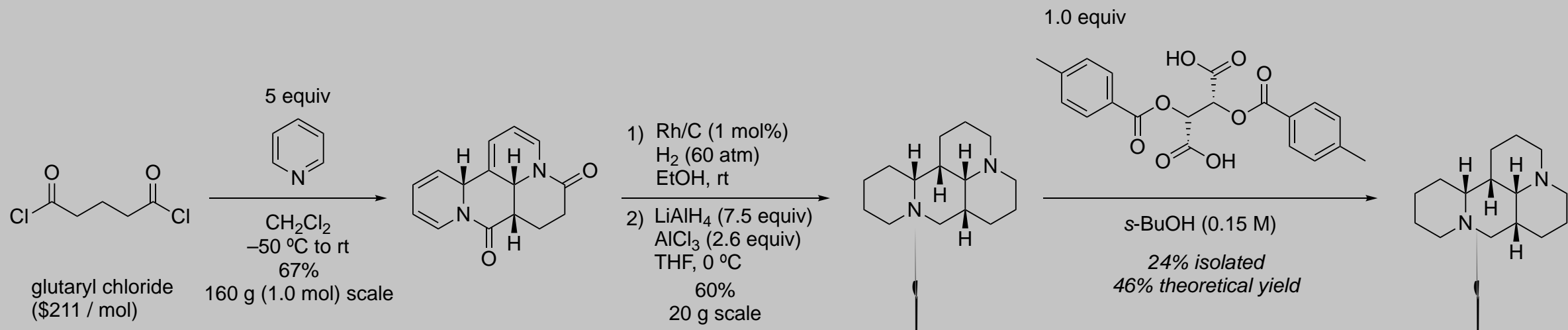




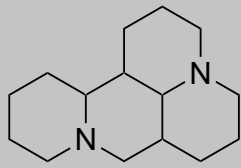
4 ep (Overall)!!

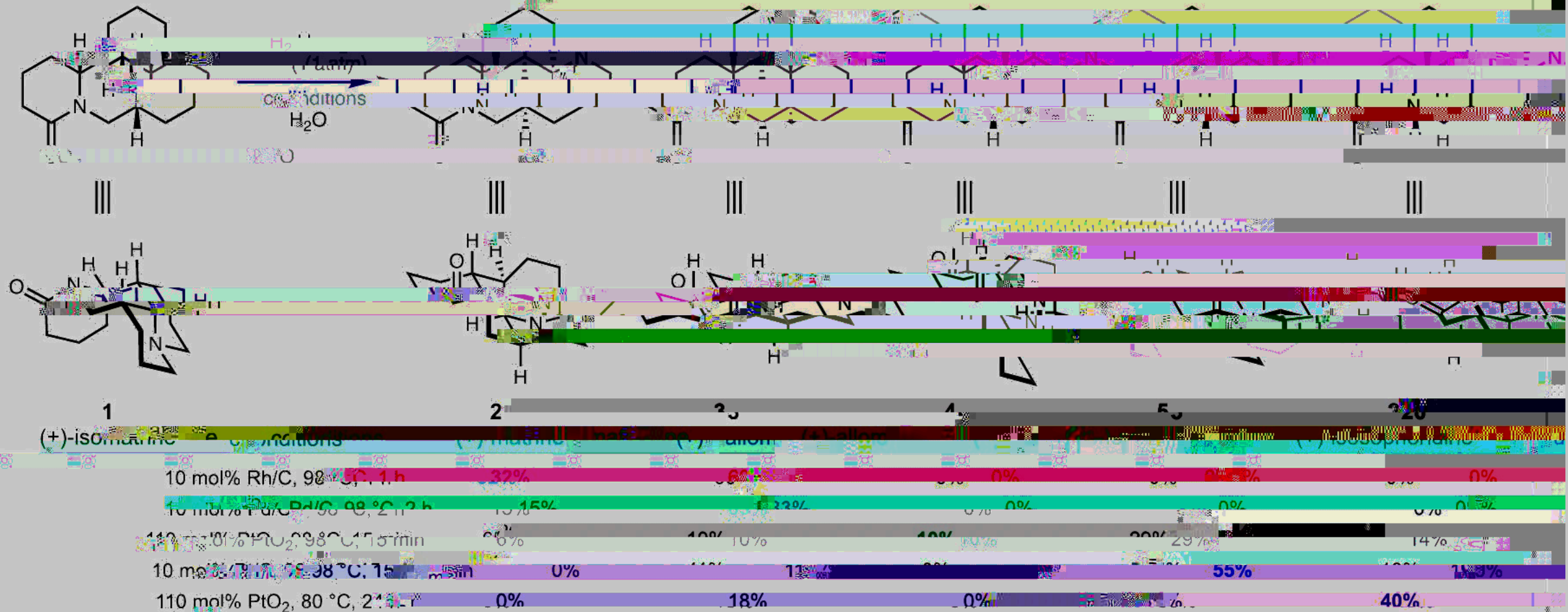












the first total synthesis of the lupin alkaloid (-)-ophoridine, and the first synthesis of (+)-isomarine, (+)-marine, (+)-allomarine, and (+)-